

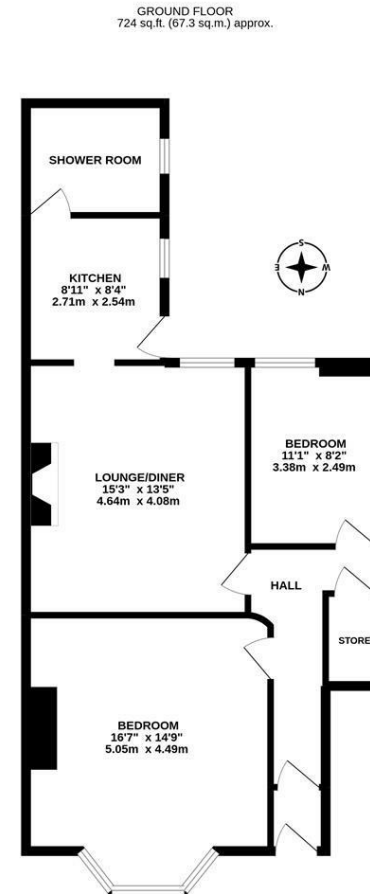
****AVAILABLE JANUARY 2026***

****FURNISHED**** A fine example of a two bedroom lower Tyneside flat found in ever popular West Jesmond. Located on Mayfair Road and immaculately presented throughout, this property is smart, stylish and is situated close to the cafe culture on Brentwood Avenue as well as only a stone's throw from West Jesmond Metro station.

The property briefly comprises an entrance porch through to hallway with separate storage cupboard; spacious double bedroom to the front with bay window and laminate wood flooring; second double bedroom to the rear with laminate wood flooring; an inviting lounge/diner boasting a period fireplace, spotlighting and tasteful furniture; modern fitted kitchen with integrated appliances and a plush shower room WC to the rear off shoot. Externally there is a private, south-facing yard to the rear and on street permit parking to the front. Fully furnished throughout, with gas central heating and double glazed windows.

Finished to a high standard, this is a stunning property ideal for either a professional couple or professional sharers alike.

Available 10th January 2026 | £1,250pcm |
Ground Floor Tyneside Flat | Well Presented
Throughout | 724 Sq. ft (67.3 m2) |
Lounge/Diner | Two Double Bedrooms |
Furnished | Modern Fitted Kitchen | Plush Shower
Room WC | Great Location | Private Rear Yard |
Permit Parking | GCH & DG | Council Tax Band:
B | EPC Rating: D



TOTAL FLOOR AREA: 724 sq.ft. (67.3 sq.m.) approx.
Whilst every attempt has been made to ensure the accuracy of the floorplan contained here, measurements of doors, windows, rooms and any other items are approximate and no responsibility is taken for any error, omission or mis-statement. This plan is for illustrative purposes only and should be used as such by any prospective purchaser. The services, systems and appliances shown have not been tested and no guarantee as to their operability or efficiency can be given.
Made with Metropix ©2022

£1,250 PCM

IMPORTANT NOTE: These particulars and the descriptions and measurements herein do not constitute representation and whilst every effort has been made to ensure accuracy, this cannot be guaranteed.

